

JBC PHBE

for PCBs up to 36 x 28 cm / 14 x 11"

Indispensable for avoiding thermal shock on multilayer PCBs while reworking.

It is a complete solution to **rework medium / large PCBAs, such as the ones commonly used in laptops or PCB panels**. It features a heating area of 360 x 277 mm / 14.2 x 10.9 in. and four TC connections.

Matchless reliability in temperature accuracy and control of the PCBA so that no component is damaged.

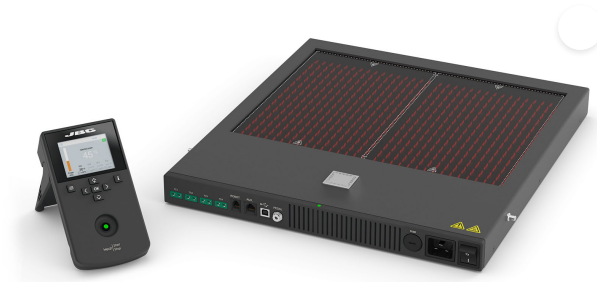
It features three work modes:

Power Mode allows working at a fixed power level with the option of using protection thermocouple.

Temperature Mode keeps the PCBA at a selected temperature, using the regulation thermocouple and, optionally, protection thermocouples.

Profile Mode allows control of the heating rate of the PCBA by the use of a control and protection thermocouple, without exceeding the recommended limit levels in each application. It features 22 customizable profiles.

Up to four thermocouples can be connected in any of the three work modes.



**Don't believe us...
TRY IT!**



REFERENCES

PHBE-9B 100V
PHBE-1B 120 V
PHBE-2B 230V

PRODUCT COMPOSITION

- 1 [Instruction Manual](#)
- 1 Heater unit
- 1 Console
- 2 [PH218 Thermocouple Type K](#)
- 1 [PH217 Kapton Tape](#)

SPECIFICATIONS

Peak power	1800W (120V & 230V) 1400W (100V)
Selectable temperature	50 to 250 °C / 120 to 482 °F
Heating area	180 x 277 mm / 7.1 x 10.9 in - 1 zone 360 x 277 mm / 14.2 x 10.9 in - 2 zones
Type K TC connector	4 for Control & Protection
Profiles	22 (up to 16 steps for each)
Set temperature profiles	3 profiles (2, 3 or 4 steps)
Maximum work time	50 min or indefinite
ESD safe	Meet ANSI/ESD S20.20-2021
USB-A	Firmware update Graphics and profiles
USB-B	PC communications
Robot connector	Remote control
Aux. connector	Console connection

Pedal connector Connect a pedal (ref. P-005) to control the heater

WEIGHT AND DIMENSIONS

PreHeater Unit 426 x 444 x 41 mm / 6.90 kg.
16.77 x 17.48 x 1.61 in / 15.21 lb.

Package 705 x 625 x 365 mm / 12.60 kg.
27.76 x 24.61 x 14.37 in / 27.78 lb.

Copyright © 2024 JBC Soldering S.L. | [Legal Notice](#) | [Privacy Policy](#) | [Terms and Conditions](#) | [Cookie policy](#) | [Internal Communication](#) | [RSS Feed](#) | [JBC Store](#) | [Contact Us](#)

CONNECTABLES

RWT-B Adjustable Rework Arm



RWB-B Adjustable Rework Arm for PHBE (Base 480x550 mm)



RHB-A Articulated Hand Rest with base for PHBEK



PHB-SA Support for PCBs up to 36 x 28 cm / 14 x 11 in

Accessories

P-005 Pedal



P-405 Pedal for Nano Rework Station

Consumables

PH223 Thermally Conductive Tape 25 mm



PH222 Thermally Conductive Tape 50 mm