

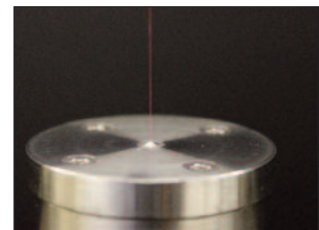
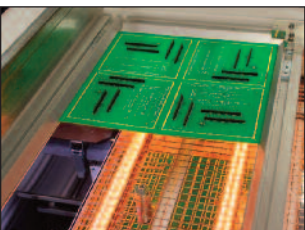
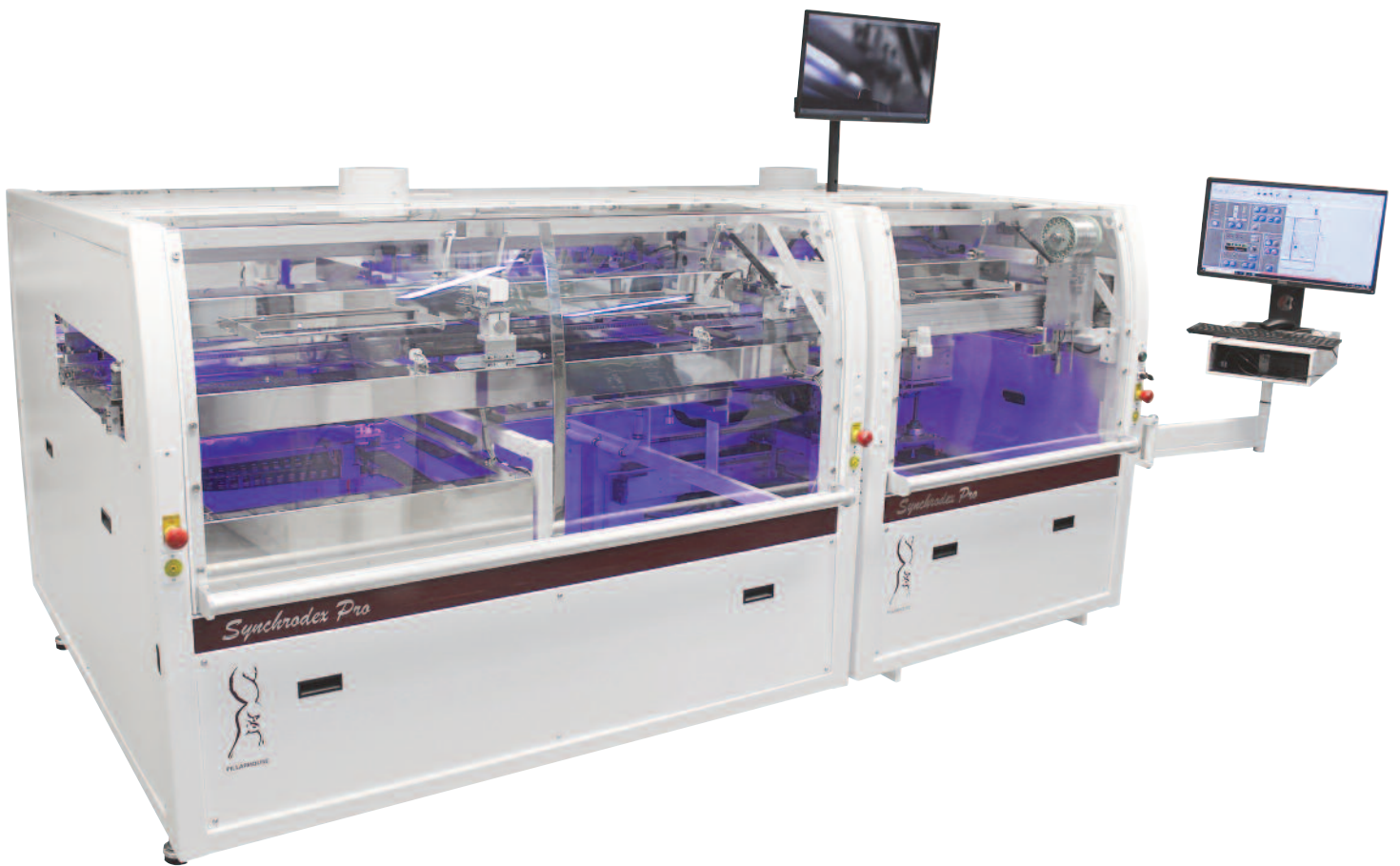


# SYNCHRODEX PRO



Pillarhouse  
INTERNATIONAL

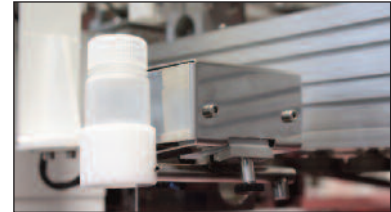
Enhanced flexible, in-line, modular selective soldering system



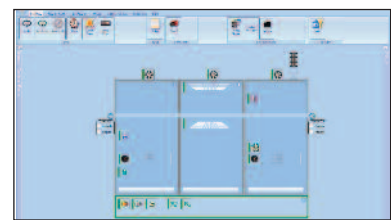
# SYNCHRODEX PRO



Pillarhouse  
INTERNATIONAL



AUTOMATIC NOZZLE  
CONDITIONING



NEW PILLARCOMM  
CONTROL SOFTWARE

## STANDARD FEATURES

- 508mm x 508mm (20" x 20") and 610mm x 610mm (24" x 24") board handling sizes
- Interchangeable Mechanical or Magnetic solder bath and pump
- Lead-free solder capability
- Inerted Nitrogen system
- Set of AP style solder nozzle tips
- Automatic nozzle conditioning system
- Thermal nozzle calibration
- Solder level detect and motorised wire feeder
- Wave height correction
- DC drives on all axes
- Colour programming camera
- Automatic fiducial correction
- Drop Jet fluxer
- Internal fume extraction
- Integral PC and monitor
- New PillarCOMM control software
- Multiple level password protection
- IPC-2591 (CFX), Smart Factory ready

## MONITORING OPTIONS

- Flux spray, flow and spray & flow
- Pump rpm
- O<sub>2</sub> ppm
- Nitrogen flow

## SYSTEM OPTIONS

- High definition process viewing camera
- Top side IR preheat, with closed-loop control
- Motorised underside IR preheat, at all cell positions
- Ultrasonic fluxing
- Dual Drop-Jet / Ultrasonic fluxing
- Laser-based PCB warp correction
- Micro nozzle assembly
- Solder reel identification
- Nitrogen generator

Pillarhouse International Ltd.  
Rodney Way, Widford, Chelmsford, Essex CM1 3BY UK  
Pillarhouse USA, Inc.  
201 Lively Blvd, Elk Grove Village, IL 60007 USA  
Pillarhouse (Suzhou) Soldering Systems Co., Ltd.  
11 Yuanqi Road, Xiangcheng, Suzhou, China 215131

[www.pillarhouse.co.uk](http://www.pillarhouse.co.uk)  
Tel: +44 (0) 1245 491333 Fax: +44 (0) 1245 491331  
[www.pillarhouseusa.com](http://www.pillarhouseusa.com)  
Tel: +1 847 593 9080 Fax: +1 847 593 9084  
[www.pillarhouse.cn](http://www.pillarhouse.cn)  
Tel: +86 512 6586 0460 Fax: +86 512 6959 0567